



www.santos.fr

CENTRIFUGAL JUICER # 50
“Santos Juicer”
To extract the maximum quantity
of fruit and vegetable juices



Internationally patented models





FOR A HIGH QUALITY JUICE

You can make any kind of fruit and vegetable juices and keep all the vitamins with the **juice extractor #50**. Easy to use, silent and powerful, it is the ideal appliance for juice bars, hotels, restaurants and health food stores.

Safety: locking system. Electric cut off and motor braking when opening the handle.

Filter basket: obtain a perfect filtration thanks to its very fine sieve (0.5mm / 0.02" holes) Basket with 0.8mm holes available on demand.

Spout height: 200mm. Accepts glasses, jugs and blender jars.

Pusher: low effort, constant flow, maximum yield.

Extra wide feeding chute: Ø 79.5mm (3"). No need to cut fruits or vegetables.

Ezy-clean™ system: removable bowl, basket and cover (no tool needed).

Large capacity pulp container: 7.5l (2 gallons).

Powerful: Asynchronous motor, powerful (800 W) and very silent.

Output
Up to **100** liters of juice per hour

A cleaning brush and a maintenance set (1 shifter rubber ring + 3 seals) are delivered with the appliance.



VIDEO



Output

Up to **100** liters of juice per hour



A cleaning brush and a maintenance set (1 shifter rubber ring + 3 seals) are delivered with the appliance.

SANTOS, 25 YEARS EXPERIENCE

WE HAVE THE JUICE EXTRACTOR YOU NEED...

Santos has a 25 years experience in creating juice extractors and developing exclusive patented systems to provide an incomparable reliability and efficiency.

Rigour and quality

All Santos juice extractors are in accordance with the most stringent international regulations: GS, UL, NSF.



#28



#50



#58

..... 1986 2001 2006 ➔

The professional art of juicing since 1954

CENTRIFUGAL JUICER #50



QUALITY, EXPERTISE, COMFORT

High quality juice

- **Perfect filtration:** very fine sieve offering a high quality juice.
- **Maximum juice extraction:** excellent yield, dry pulp in the container.
- **Preservation of vitamins:** it extracts juice from fruits and vegetables without crushing or heating them.
- **Creativity:** possibility to make any kind of juice, ex: ginger, beetroot, cucumber, pineapple, melon, grapes...

Expertise

- **Exclusive patents:** exclusive extra wide feeding chute, Ezy-clean™ system, instant friction braking system.
- **Professional motor,** powerful and extremely silent (Santos know-how).
- **High output juice** extractor, adapted to intensive use (ex: juice bars).
- **Sturdy appliance** mostly made of aluminium and stainless steel.

Simplicity and comfort

- **Silence:** you can serenely make juice in front of your customers.
- **Space-saving product:** it fits everywhere thanks to its low overall dimensions.
- **Extra wide feeding chute:** you can put entire fruits and vegetables (time-saving).
- **Continuous juice production:** automatic pulp ejection.
- **Ezy-clean™ system:** removable bowl, basket and cover (no tool needed). Easy cleaning.
- **Large basket:** more juice, less cleaning.



TECHNICAL SPECIFICATIONS



Motor

Single phase: 220-240V – 50/60Hz – 800 W CE – GS – KC
100-120V – 50/60Hz – 800 W CE – UL – NSF

Speed: 3 000 rpm (50 Hz)
3 600 rpm (60 Hz)



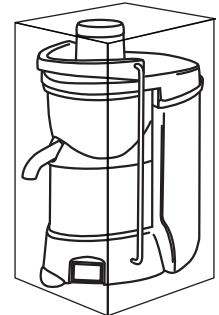
Weight

Net: 14 kg (31 lbs)
Shipping: 16 kg (35 lbs)



APPLIANCE

W: 260 mm / 10"
D: 470 mm / 19"
H: 450 mm / 18"



SHIPPING BOX

W: 315 mm / 12"
D: 500 mm / 20"
H: 570 mm / 22"

SAFETY, STANDARDS, HYGIENE

In accordance with the following regulations

- Machinery directive 2006/42/EC
- Electromagnetic compatibility 2004/108/EC
- Electrical equipment designed for use within certain voltage limits "low voltage" 2006/95/EC
- RoHS directive 2002/95/EC
- Regulation 1935/2004/EC (contact with food)

Harmonized European standards

- EN ISO 12100 - 1 and 2: 2004
- EN 60204-1: 2006
- EN 12547+A1: 2009 Juice extractors
- EN 60335-2-64: 2004 Commercial electric kitchen machines
- CE (Europe), UL (USA) and cUL (Canada), NSF (USA), KC (Korea)
- GS (Germany) checked by the LNE (National Test Laboratory)

Thermal safety

Motor protected by internal thermal detector and overload protector.

Electrical safety

- On/off switch detects overloading and no voltage.
- All mechanical parts are ground connected.
- Appliances are 100% tested after assembly.

Acoustic safety

Silent asynchronous motor.

Mechanical safety

A friction brake immediately stops the basket when opening the handle.

Hygiene

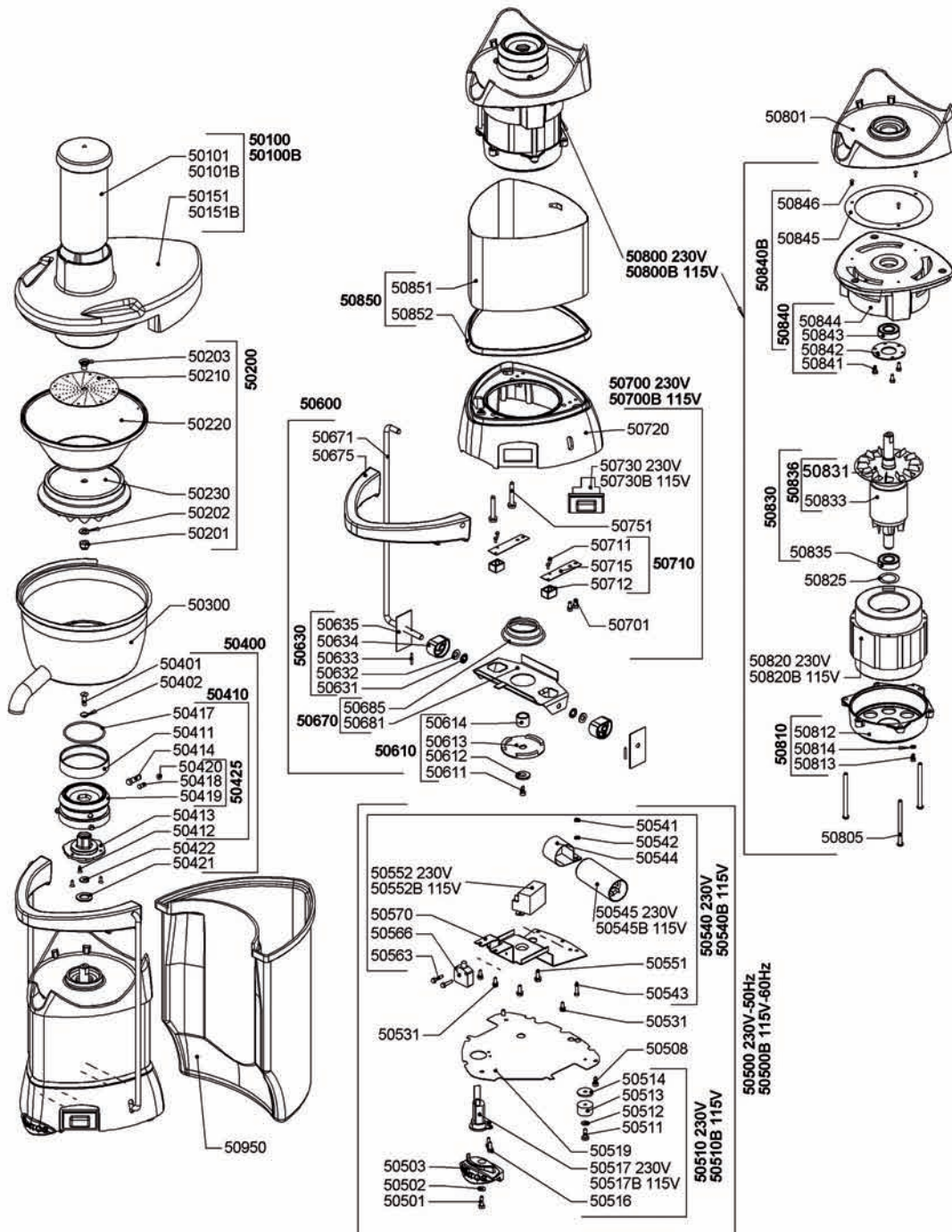
All removable parts can be put in a dishwasher or easily cleaned with hot soapy water.

PRODUCT: 2-YEAR WARRANTY | MOTOR: 5-YEAR WARRANTY

CENTRIFUGAL JUICER # 50



www.santos.fr



SANTOS

140-150, avenue Roger Salengro - 69120 VAULX-EN-VELIN (Lyon) - FRANCE - Tel. +33 472 37 35 29 – Fax +33 478 26 58 21

Website: www.santos.fr – E-mail: santos@santos.fr